

Ladies and Gentlemen,

We are pleased to inform you that the Mitsubishi **MMS-X640 Mobile Mapping System** will be exhibited at **INTERGEO 2011, 27th – 29th of September**. We will welcome you in **hall 7, stand D96**.

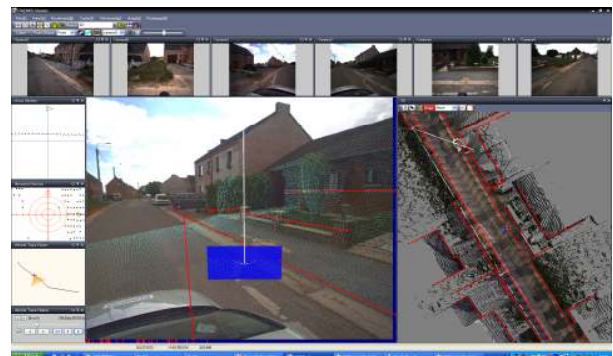
The Mitsubishi MMS-X is a highly advanced **mobile measuring system** for recording high quality 3D geospatial data. The applications include inventory and management of all types of roads (regional roads, urban streets, highways and airports) with detailed infrastructure, large scale digital mapping, follow-up and documenting of construction sites (“as-build”) as well as city planning. The MMS-X is a combination of **high-performing hardware components** (GPS/IMU/DMI, high resolution cameras, laser scanners) coupled with a variety of innovative processing software that delivers the most advanced technology performances.



The fast and efficient survey of damaged constructions, housing and environment after the Japanese earthquake is an excellent example of the economic advantages of the system. Considering the size of the disaster, the necessary means for reconstruction could hardly be estimated without such accurate data. Amongst new evolutions, we are pleased to announce that the MMS-X is now compliant with **long range high density laser scanners**.

We will also demonstrate the new functionalities of the **PADMS** software. Based on MMS-X's laser point clouds, it plugs-in to standard GIS solutions to produce very accurate 3D vector maps.

We wish you a warm welcome to our booth at INTERGEO 2011 !



PASCO Europe and Mitsubishi Electric Corporation